

Downtown Enhancement Project

Lougheed Highway: 224 Street to 226 Street

Construction Update

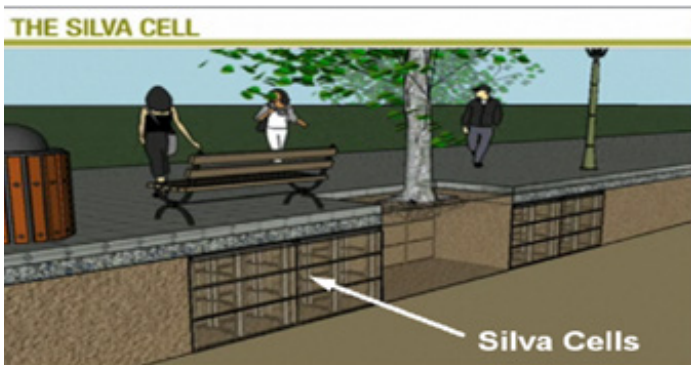


Update #1, August 23, 2018

Construction on the next phase of the Downtown Enhancement Project—Lougheed Highway from 224 Street to 226 Street—is now well underway on the north side of Lougheed Highway. This phase of the project includes:

- roadway excavation with the construction of new concrete curbs, sidewalks and street lights
- replacement of the existing storm water sewers
- planted medians with new street trees complete with modular soil systems and irrigation
- traffic signal modifications, pavement markings, and asphalt milling and paving.

The objectives of the Downtown Enhancement Projects include increasing the livability of the Town Centre, supporting business growth and encouraging future investment in the area, while enhancing the street experience for pedestrians and shoppers and the safety of road users.



What are Silva Cells?

As part of the Downtown Enhancement Project, the City is installing new street trees in Silva Cells.

Silva Cells provides street trees with the rooting zone and soil quality they need to grow into healthy, beautiful elements of our streetscapes. They are designed to help prevent tree roots from damaging sidewalks and roads and provide effective and powerful on-site stormwater management.

(Source: www.deeproot.com)

Construction Schedule update

This update focuses on construction occurring on the north side of Lougheed Highway between 224 and 226 Street. Construction dates are approximate and may change due to factors such as weather or unforeseen ground conditions.

What has been completed to date

- removal of existing north sidewalks, curbs and street trees [From 224-226]
- installation of north Silva Cells for new street trees [From 224th – 225th]
- Installation of new north storm water sewer system [From 224th – 225th]
- installation of temporary paved walkway for business access

What's planned for the next two weeks

- North-side concrete Curb Installation [From 224 St – 225 St]
- North-side Storm Sewer Installation [From 225 St – 226 St]
- North-Side Silva Cell installation [From 225 St – 226 St]
- Base Asphalt paving [From 224 St – 226 St]

See maps on page 2 for expected work zone areas for the next two weeks.

For More Information

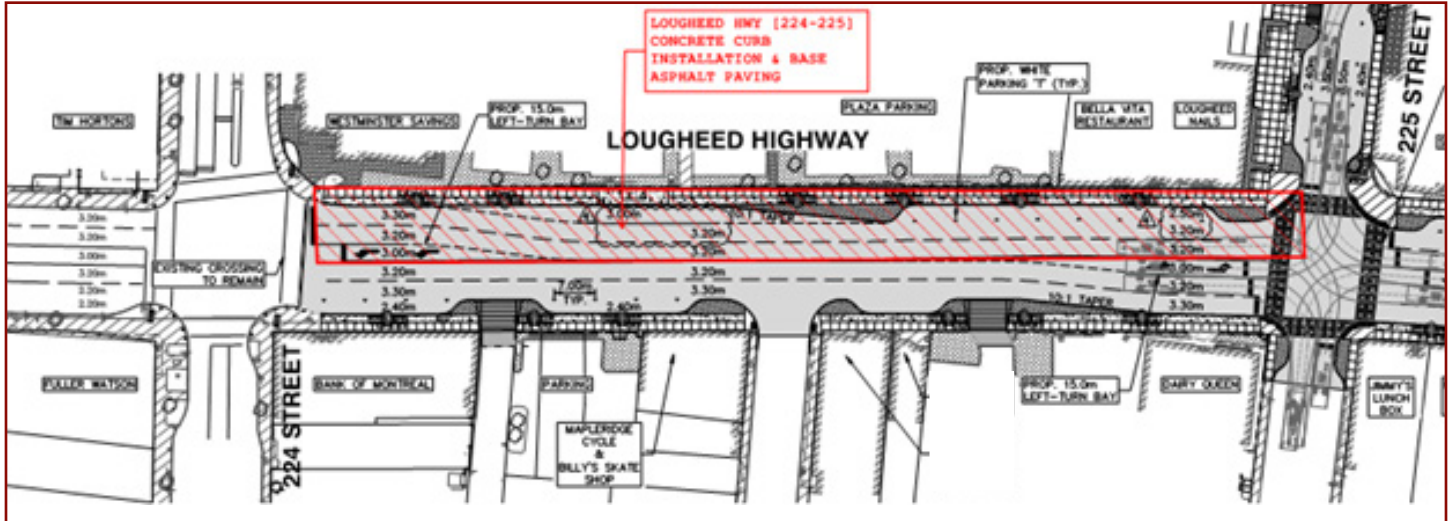
Please visit www.mapleridge.ca/1867/ for regular updates on the progress of this project.

If you have any construction-related questions or concerns, please contact Shahrzad Honarmand, Project Manager, City of Maple Ridge, at 604-467-7349.

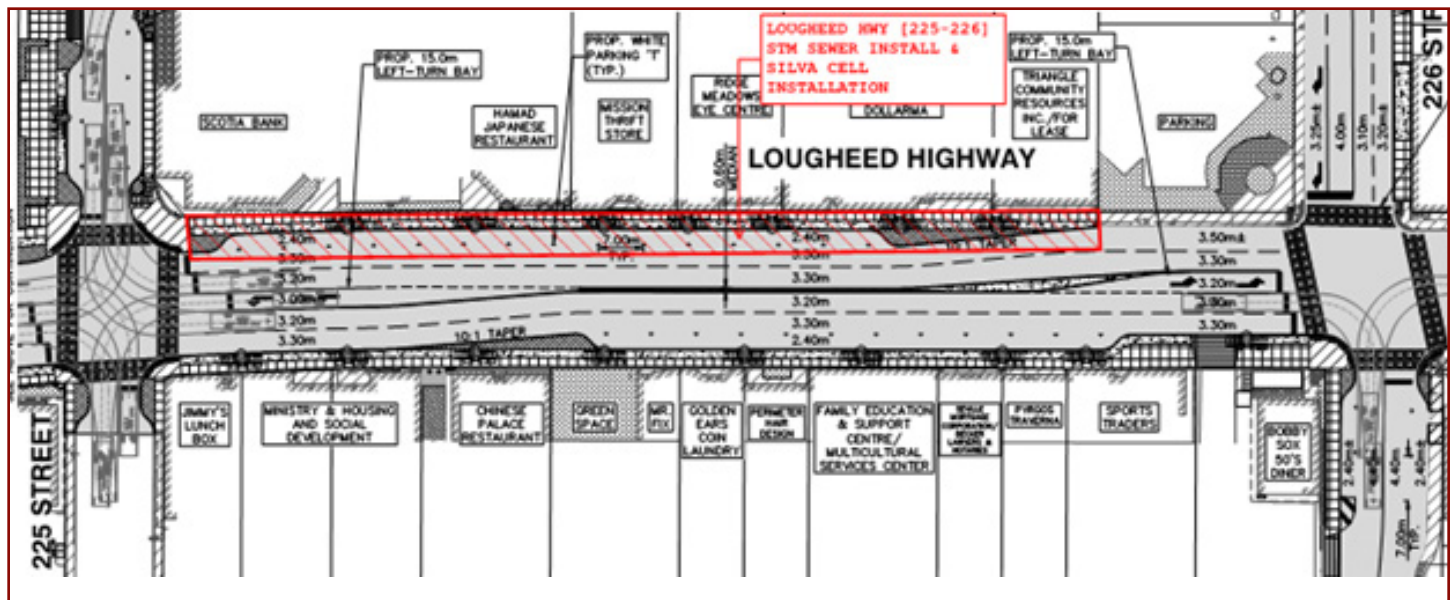
Expected work zone areas

August 27 - September 7, 2018

Lougheed Highway [224 St - 225 St] concrete curb installation and base asphalt paving



Lougheed Highway [225 St - 226 St] storm sewer installation and silva cell installation



City of Maple Ridge Contacts

Engineering Department

- Shahrzad Honarmand: 604-467-7349
shonarmand@mapleridge.ca
- Ron Guy: 604-467-7367
rguy@mapleridge.ca

Economic Development & Civic Property Department

- Bruce Livingstone: 604-467-7491
blivingstone@mapleridge.ca



mapleridge.ca